



Company Presentation

Pierre Buchmann March 26th, 2015





About Expan

- *Founded in 1993*
- *Located in Clichy (near Paris)*
- *153 K€ working capital*
- *1000 K€ average turnover per year*
- *US companies representation/support in Europe*
- *ISO-9001 products*
- *Market :*
 - *Airborne and Ground Telemetry*
 - *Video and Scan Converters and recorders*
 - *New trends : PC interfaces (Ethernet, USB,...) in telemetry*



About customers



energie atomique • energies alternatives



How to help users?



- *Customers are, first of all, Users*
- *Offering the widest FTI (IEV) equipment range*
- *Outstanding user support :*
 - *Administrative support (import/export, licenses, Sales conditions...)*
 - *Help mutual understanding (User/Manufacturer)*
 - *Free On-site Demonstrations/Loan*
 - *Free Installation – Integration - Training*
 - *Free default investigation during product life time*
 - *Free integration expertise during product life time*
 - *Free unlimited labor warranty on products*
 - *Testing tools in Expan labs*
 - *Allows end user direct communication with manufacturers*
- *Technical knowledge to improve products*
- *We supply what we know and what is cost effective*
- *High availability 7/7 - 24/24 hotline*



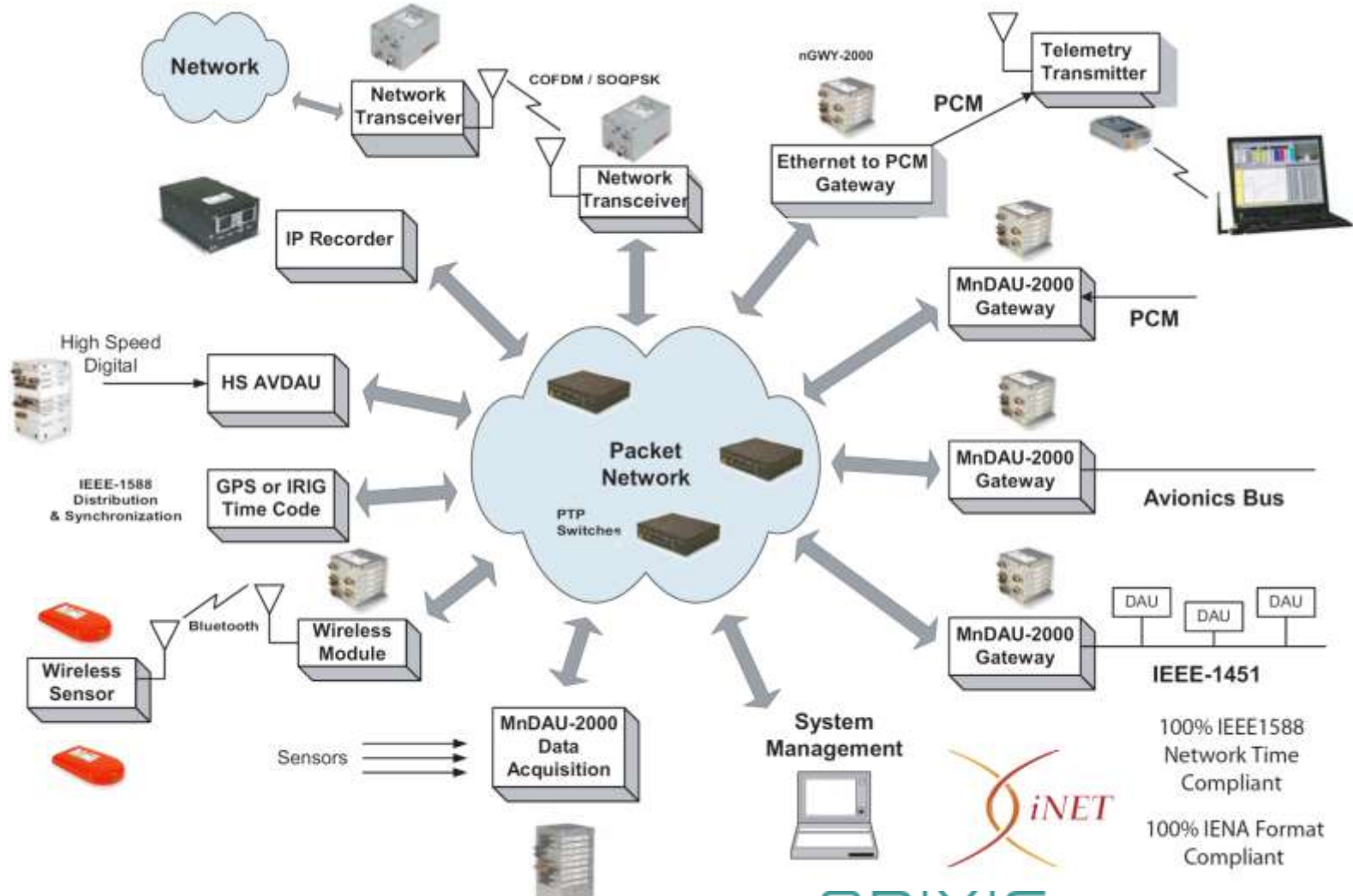
Airborne Telemetry



- **Sensors** *Wireless*
- **Encoders** *Ethernet & PCM - iNet & IENA*
- **Network** *PTP Switches* *time IEEE-1588*
- **Mux / Demux** *Ethernet, Fiber*
- **Recorders & Servers** *Ch10, STANAG, Ethernet, Card/SSD*
- **Network Transceiver** *OFDM & SOQPSK - S & C band*
- **RF Transmitters** *All bands & modulation*
- **Video over IP** *MPEG2/4, H-264*
- **High Speed IP Cameras**
- **RF Receivers**
- **Radar Transponders**
- **Flight Termination**
- **Power Amplifiers**
- **Touch screen indicators**



Ethernet & PCM Encoders



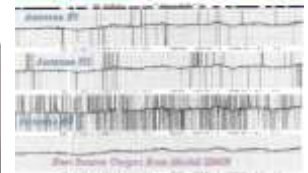
100% IEEE1588
Network Time
Compliant
100% IENA Format
Compliant



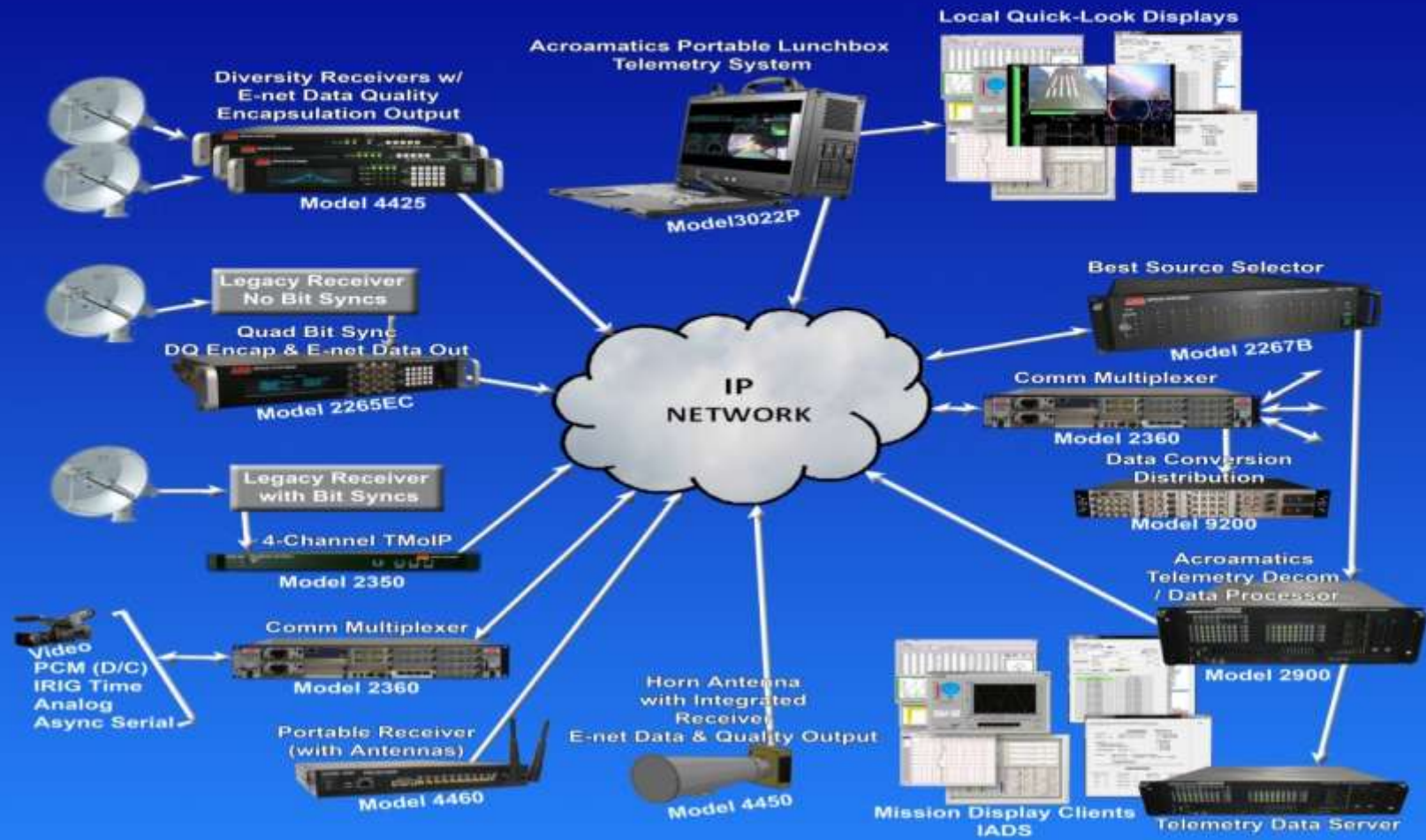
Ground Telemetry



- **RF/IF Receivers** - Ethernet **Ch10 Output** stream
 - All bands modulations
 - Downconverter & Diversity Combiner
 - Rack, PCI, PCMCIA, USB, RS232
 - Telemetry and Space applications (SGLS)
- **Bit Synchronizers** - up to 40 Mbps
 - Rack, PCI, PCMCIA, USB, RS232
 - Soft Frame Correlation
- **PTP Switches** - IEEE-1588 v1 & v2
 - **Cabin** or ground environment
- **Best Source Selector** - Multi-path PCM combiner
- **Frame Synchronizers** - Rack, PCI, PCMCIA, USB, **Ethernet Ch10**
 - with Decommuration software
- **Recorder/Player/Analyzer** - **RF, IF, PCM, Ethernet, Video, Ch10**



NETWORK CENTRIC SOLUTIONS



Other products



- **PCM & Video over IP** - PCM & Video transfer Ethernet **CH10**
 - Frame Sync with Irig-B Time
 - very low latency
- **Interfacer** - Distribution & signal conversion
 - ECL/TTL/RS422/BiPolar
 - Bi-Phase/NRZ/RNRZ
- **Matrix switch** - 16x16 to 256x256
- **Data Link tester** - Noise Generator
 - Auto generation of Eb/No vs Data rate results
- **Mux / Demux** - Transmission via Ethernet or Data/Clock
 - All signal type
- **Video Encoder/Decoder** - HD/SD
 - H264, MPEG4 MPEG2
 - **Very Low latency**
 - Airborne and box level products
 - Ethernet and Serial Output
- **Scan Converters** - converts X Y Z Signal in Video (HUD)



Custom integration



- Custom Telemetry receivers
- Custom Telemetry recorders
- Multiple chassis and package are available : rack mount, portable, notebook, ruggedized, Mil-Std 810,....



*Thanks for your attention and
your future questions...*

- *Any interesting technology ?*
- *Any attractive product ?*
- *Similar with what you use actually ?*
- *Any project we need to talk about ?*
- *What are your future needs ?*